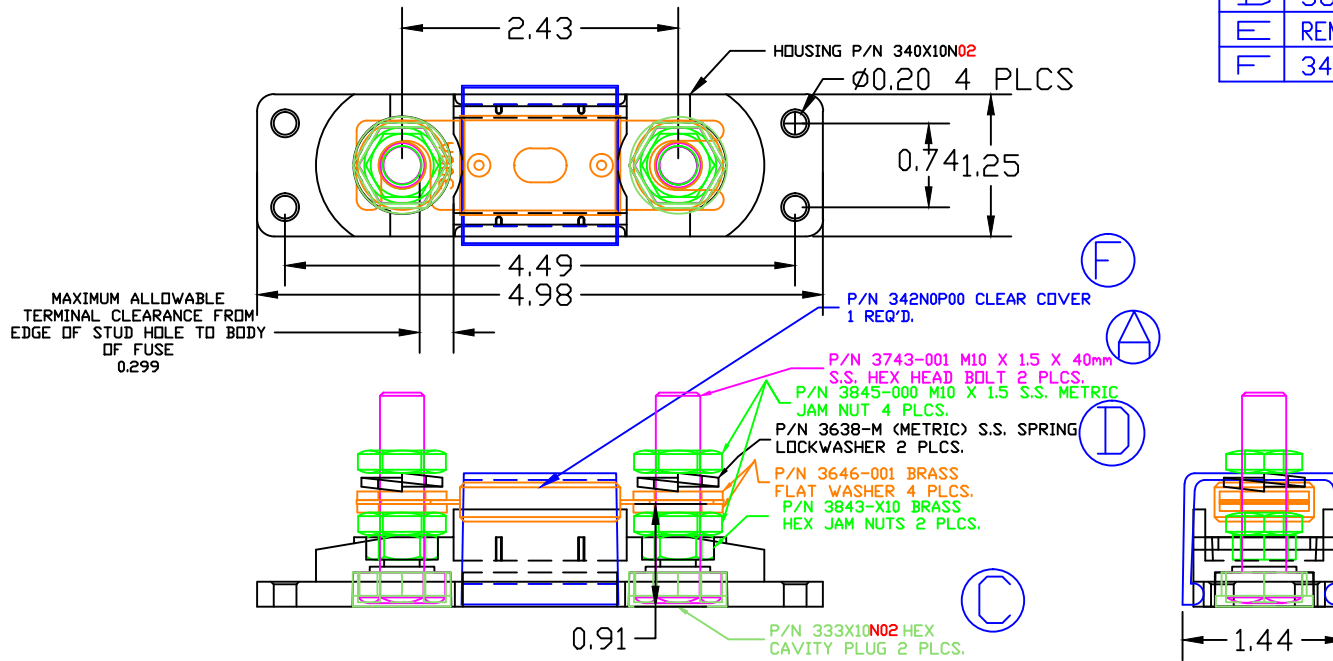


THE INFORMATION CONTAINED IN THIS DRAWING IS THE SOLE PROPERTY OF VTE INCORPORATED. ANY REPRODUCTION IN PART OR WHOLE WITHOUT THE WRITTEN PERMISSION OF VTE INCORPORATED IS PROHIBITED.

LTR.	REVISIONS	DATE
A	3743-001 WAS 3743-000	01MAR07
B	487N9V** WAS 487N8V**	14MAR07
C	333X10N** WAS 333X10V**	20MAR07
D	3638-M WAS 3638-000	02MAR09
E	REMOVED INSULATORS 2 PLCS.	04MAY12
F	342N0P00 WAS 342N0V00	30JUL15



MAXIMUM RECOMMENDED AMPERAGE: 300 AMPS @ 12 VDC

DO NOT SCALE

TOLERANCE UNLESS OTHERWISE SPECIFIED: ±0.30%/±0.8mm  
 RADIAL DIAMETERS TO BE MEASURED OVER MANDRELS,  
 RING GAGES OR PIN GAGES OF SUITABLE SIZE

FUSE NOT INCLUDED (B)  
 INSULATORS NOT INCLUDED

(E)

BASE MATERIAL: GLASS-REINFORCED NYLON  
 BASE MATERIAL U.L. RATING: 94 HB  
 BASE COLOR: RED

**VTE Incorporated**  
 5437 Robinson Road, P.O. Box 790  
 Pellston, Michigan 49769  
 Telephone: 1-800-527-9256, 231-539-8000  
 FAX: 231-539-0914

REF: ***	DATE: 10NOV04	DRN BY: BRH	WEIGHT: ***
TITLE: ANL TYPE FUSE HOLDER			SCALE:
MATERIAL:		PART NO.	
COLOR: ***	DRG CLASS: ***	ANB740X10 N02	