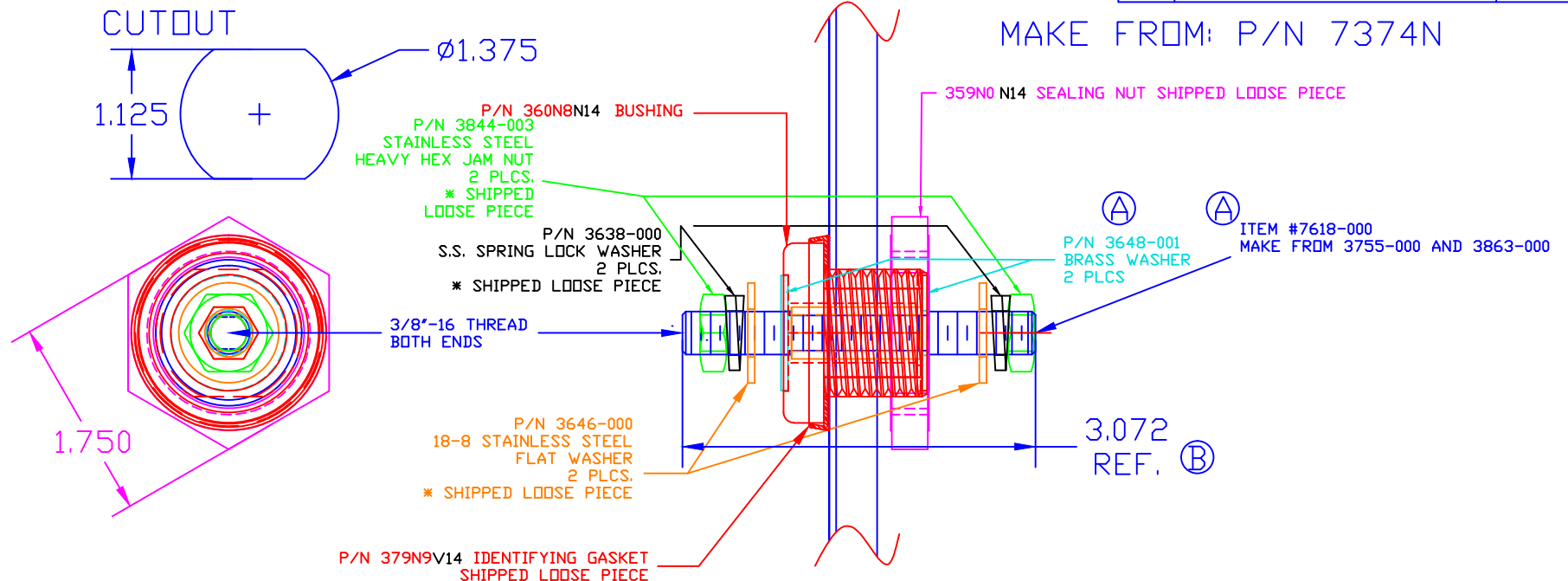


USE GREENLINE
 BUNCH ASSEMBLY
 THE INFORMATION CONTAINED IN THIS DRAWING IS THE SOLE PROPERTY OF VTE
 INCORPORATED. ANY REPRODUCTION IN PART OR WHOLE WITHOUT THE WRITTEN
 PERMISSION OF VTE INCORPORATED IS PROHIBITED.

LTR.	REVISIONS	DATE
A	3648-001 WAS 3648-000, 7618-000 WAS 7618-001	03FEB10
B	3.072 WAS 3.250	27JUL10

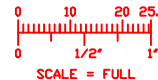
MAKE FROM: P/N 7374N




OBSOLETE

TOLERANCE UNLESS OTHERWISE SPECIFIED:
 MOLDED PRODUCTS ONLY: ±.030"/±0.8mm
 HARDWARE ITEMS: ±0.010"/±0.25mm
 RADIAL DIAMETERS TO BE MEASURED OVER MANDRELS,
 RING GAGES OR PIN GAGES OF SUITABLE SIZE

MAXIMUM FASTENER TORQUES:
 JAM NUTS: 15 FT./LBS. (180 IN./LBS.)
 SEALING NUT: 10 FT./LBS. (120 IN./LBS.)
CURRENT CARRYING CAPACITY: 350 AMPS @ 12VDC



BASE MATERIAL: GLASS-REINFORCED NYLON
BASE MATERIAL U.L. RATING: 94 HB
VTE MATERIAL P/N: 1111210514



VTE Incorporated
 5437 Robinson Road, P.O. Box 790
 Pellston, Michigan 49769
 Telephone: 1-800-527-9256, 231-539-8000
 FAX: 231-539-0914

REF: ***	DATE: 28MAY09	DRN BY: BRH	WEIGHT: ***
TITLE: POWER BUSHING, BRASS CORE 350 AMP			SCALE:
MATERIAL:		PART NO.	
COLOR: ****	DRG CLASS: ****	BCB374N0N14	