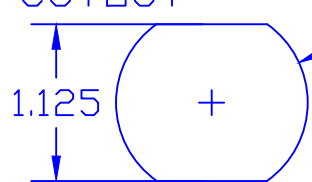


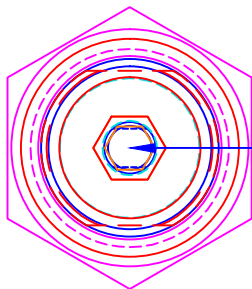
PUNCH ASSEMBLY  
 #60008 FOR FRAME  
 THE INFORMATION CONTAINED IN THIS DRAWING IS THE SOLE PROPERTY OF VTE  
 INCORPORATED. ANY REPRODUCTION IN PART OR WHOLE WITHOUT THE WRITTEN  
 PERMISSION OF VTE INCORPORATED IS PROHIBITED.

LTR.	REVISIONS	DATE
⌒	7618-000 WAS 7618-001	20OCT09



Ø1.375

1.125



3/8"-16 THREAD  
 BOTH ENDS

P/N 3871-004 HEX COUPLING NUT

P/N 3646-000  
 18-8 STAINLESS STEEL  
 FLAT WASHER

P/N 319N8V14 HEX CAP

P/N 3844-003  
 STAINLESS STEEL  
 HEAVY HEX JAM NUT  
 P/N 3638-000  
 S.S. SPRING LOCK WASHER

P/N 360N8N14 BUSHING

MAKE FROM: P/N 7374N

359N0 N14 SEALING NUT

P/N 3648-001  
 BRASS WASHER  
 2 PLCS.

ITEM #7618-000  
 MAKE FROM 3755-000 AND 3863-000

OBSOLETE

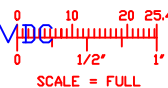
MAXIMUM FASTENER TORQUES:

JAM NUTS: 15 FT./LBS. (180 IN./LBS.)

SEALING NUT: 10 FT./LBS. (120 IN./LBS.)

CURRENT CARRYING CAPACITY:

350 AMPS @ 12VDC



BASE MATERIAL:

BASE MATERIAL U.L. RATING:

VTE MATERIAL P/N:

GLASS-REINFORCED NYLON

94 HB

1111210514

TOLERANCE UNLESS OTHERWISE SPECIFIED:  
 MOLDED PRODUCTS ONLY: ±.030"/±0.8mm  
 HARDWARE ITEMS: ±0.010"/±0.25mm  
 RADIAL DIAMETERS TO BE MEASURED OVER MANDRELS,  
 RING GAGES OR PIN GAGES OF SUITABLE SIZE



VTE Incorporated

5437 Robinson Road, P.O. Box 790  
 Pellston, Michigan 49769  
 Telephone: 1-800-527-9256, 231-539-8000  
 FAX: 231-539-0914

REF: ***	DATE: 31DEC08	DRN BY: BRH	WEIGHT: ***
TITLE: POWER BUSHING JUMPER BRASS CORE 350 AMP		CHK'D BY: BRH	SCALE:
MATERIAL:		PART NO.	
COLOR: ***	DRG CLASS: ***	BCJB374N0 N14	