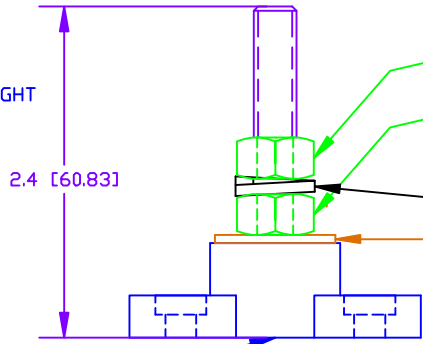
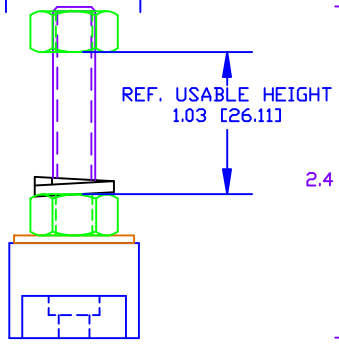
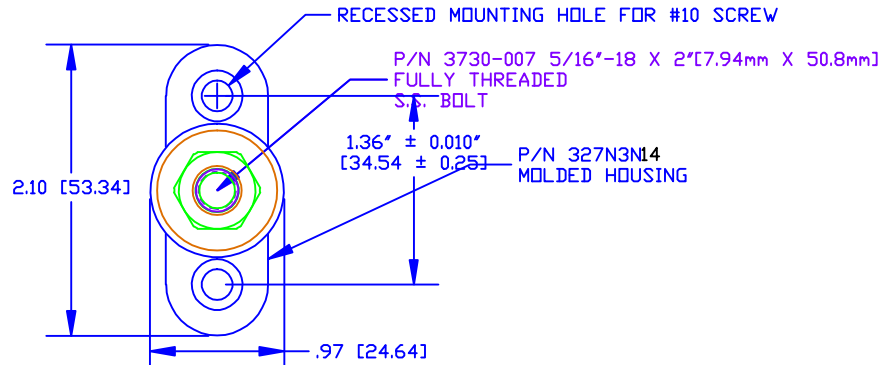


THE INFORMATION CONTAINED IN THIS DRAWING IS THE SOLE PROPERTY OF VTE INCORPORATED. ANY REPRODUCTION IN PART OR WHOLE WITHOUT THE WRITTEN PERMISSION OF VTE INCORPORATED IS PROHIBITED.

| LTR. | REVISIONS | DATE |
|------|-----------|-------|
| * | ***** | ***** |
| | | |
| | | |



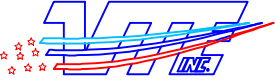
OPTIONAL CONSTRUCTION NOTE:
COLOR OF BOLT CAVITY PLUG ON BOTTOM OF ASSEMBLY MAY VARY

- P/N 3843-001 5/16"-18 STAINLESS STEEL HEAVY JAM NUT
- P/N 3843-000 5/16"-18 TIN PLATED BRASS JAM NUT BOTTOM NUT FACTORY ASSEMBLED TO 12 FT./LBS. (144 IN./LBS.)
- P/N 3642-000 5/16" STAINLESS STEEL SPRING WASHER
- P/N 3645-000 5/16" STAINLESS STEEL FLAT WASHER

TOLERANCE UNLESS OTHERWISE SPECIFIED: ±0.030"/±0.8mm
RADIAL DIAMETERS TO BE MEASURED OVER MANDRELS,
RING GAGES OR PIN GAGES OF SUITABLE SIZE

BASE MATERIAL: GLASS-REINFORCED NYLON
 BASE MATERIAL U.L. RATING: 94 HB
 DIELECTRIC STRENGTH: 630 VOLTS/MIL PER ASTM D149
 CURRENT RATING: 250 AMPS
 TEMP. RISE AT LOAD: 46 DEG. F.
 MAXIMUM RECOMMENDED TORQUE: 10 FT./LBS. (120 IN./LBS.)

DO NOT SCALE



VTE Incorporated
 5437 Robinson Road, P.O. Box 790
 Pellston, Michigan 49769
 Telephone: 1-800-527-9256, 231-539-8000
 FAX: 231-539-0914

| | | | |
|-------------------------------------|---------------|-----------------------|---------------|
| REF: ***** | DATE: 05DEC06 | DRN BY: BRH | WEIGHT: ***** |
| TITLE: 5/16"X2" SMALL JUNCTION STUD | | | SCALE: |
| MATERIAL: BLACK | | PART NO. 0077031N14-X | |
| COLOR: BLACK | | DRG CLASS ***** | |