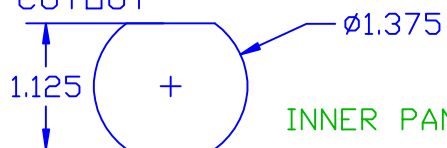


THE INFORMATION CONTAINED IN THIS DRAWING IS THE SOLE PROPERTY OF VTE INCORPORATED. ANY REPRODUCTION IN PART OR WHOLE WITHOUT THE WRITTEN PERMISSION OF VTE INCORPORATED IS PROHIBITED.

LTR.	REVISIONS	DATE
A	3850-000 WAS 3850, 3850-001 ADDED 2 PLCS.	02MAR07
B	ADDED CALLOUT FOR SPACER AND INSTRUCTION SHEET	01MAY07
C	ADDED CALLOUT FOR P/N 379 PANEL SEAL	113FEB08

VTE MAKES NO WARRANTY, EXPRESSED OR IMPLIED, AS TO THE SUITABILITY OF A PRODUCT FOR ANY INTENDED USE. THE CUSTOMER SHALL BEAR THE SOLE RESPONSIBILITY OF DETERMINING THE SUITABILITY OF ANY VTE PRODUCT FOR ITS END USE.

USE GREENLEE
PUNCH ASSEMBLY
#60098 FOR PANEL
CUTOUT



ASSEMBLY
#7B5050N02W

1/8" ALUMINUM PANEL

OUTER PANEL BUSHING

FLAT WASHER

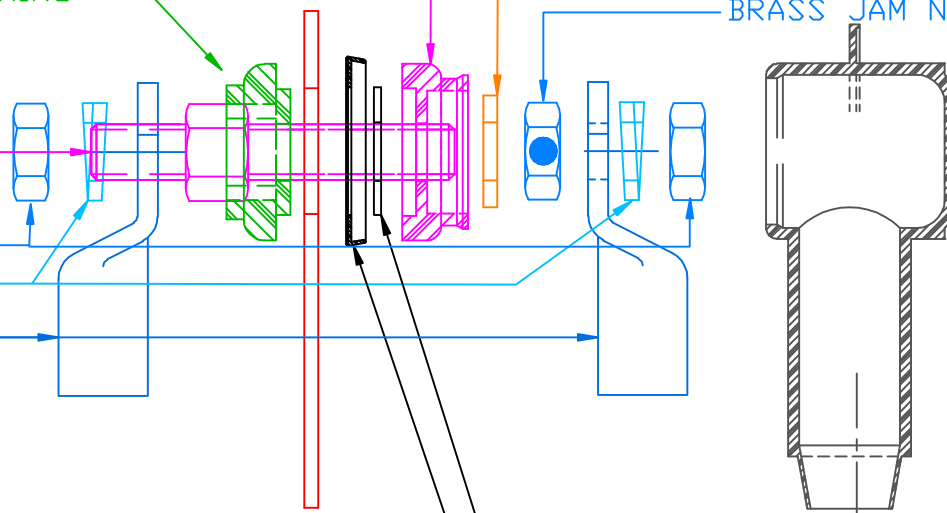
BRASS JAM NUT (BLUE DOT TE

BRASS HEX THREADED STUD

S.S. HEX JAM NUTS

SS LOCKWASHERS

CABLE TERMINALS



USE PROVIDED SPACER IF INNER
TOLERANCE UNLESS OTHERWISE SPECIFIED: $\pm 0.30 / \pm 0.8mm$
RADIAL DIAMETERS OF BS MEASURED FROM MAIN BS.
RING GAGES OR PIN GAGES OF SUITABLE SIZE

MAXIMUM AMPERAGE: 500 AMPS @ 12VDC

BASE MATERIAL:

GLASS-REINFORCED NYLON

BASE MATERIAL U.L. RATING:

94 HB

INCLUDES: (1) 232E4V02 WEATHERPROOFING TERMINAL COVER

OPTIONAL ITEMS SHOWN FOR ILLUSTRATIVE
PURPOSE, NOT INCLUDED:

4/0 GA. TERMINAL LUGS (2 PLACES)

VTE Incorporated

 5437 Robinson Road, P.O. Box 790
 Pellston, Michigan 49769
 Telephone: 1-800-527-9256, 231-539-8000
 FAX: 231-539-0914

REF: *****	DATE: 02JAN03	DRN BY: BRH	WEIGHT: *****
TITLE: POWER BUSHING 1/2" STUD 1/8" MAX PANEL WEATHERPROOF		CHK'D BY: BRH	SCALE:
MATERIAL:		PART NO.	
COLOR: RED	DRG CLASS *****	7B5050N02W	