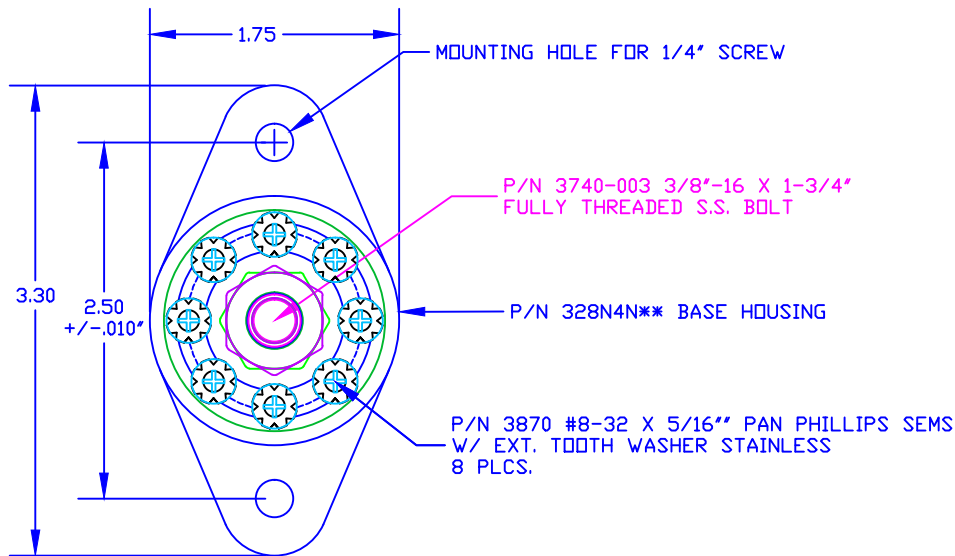
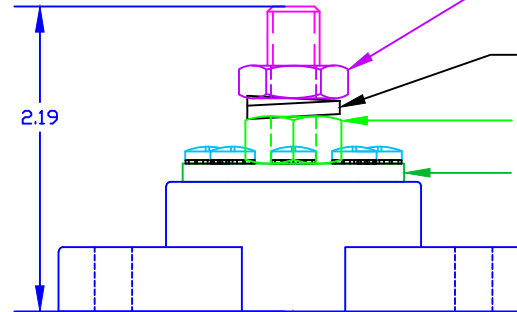
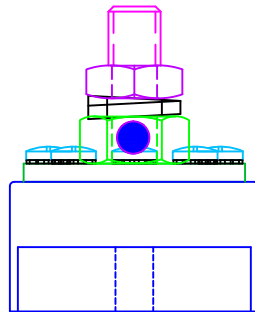


THE INFORMATION CONTAINED IN THIS DRAWING IS THE SOLE PROPERTY OF VTE INCORPORATED. ANY REPRODUCTION IN PART OR WHOLE WITHOUT THE WRITTEN PERMISSION OF VTE INCORPORATED IS PROHIBITED.

LTR.	REVISIONS	DATE
≠	*****	00-00-98




DO NOT SCALE



P/N 329N0V** CAVITY PLUG (NOT SHOWN)

TOLERANCE UNLESS OTHERWISE SPECIFIED: ±.030"/±0.8mm
RADIAL DIAMETERS TO BE MEASURED OVER MANDRELS,
RING GAGES OR PIN GAGES OF SUITABLE SIZE

BASE MATERIAL:	GLASS-REINFORCED NYLON
BASE MATERIAL U.L. RATING:	94 HB
BUS MATERIAL:	NICKEL PLATED COPPER
VOLTAGE RATING:	48 VOLTS DC MAX.
BUS AMPERAGE RATING:	160 AMPS DC (8 X 20 AMP CIRCUITS)
TEMPERATURE RISE AT LOAD:	27.9 DEG. C. (52 DEG. F.)
RECOMMENDED MAXIMUM TORQUE:	12 FT./LBS. (144 IN./LBS.)

		VTE Incorporated 5437 Robinson Road, P.O. Box 790 Pellston, Michigan 49769 Telephone: 1-800-527-9256, 231-539-8000 FAX: 231-539-0914	
		REF: *****	DATE: 09APR03
TITLE: 3/8" POWER DISTRIBUTION POST			SCALE: NONE
MATERIAL: NOTED		PART NO.	
COLOR:	DRG CLASS *****	RN77837-XN14	