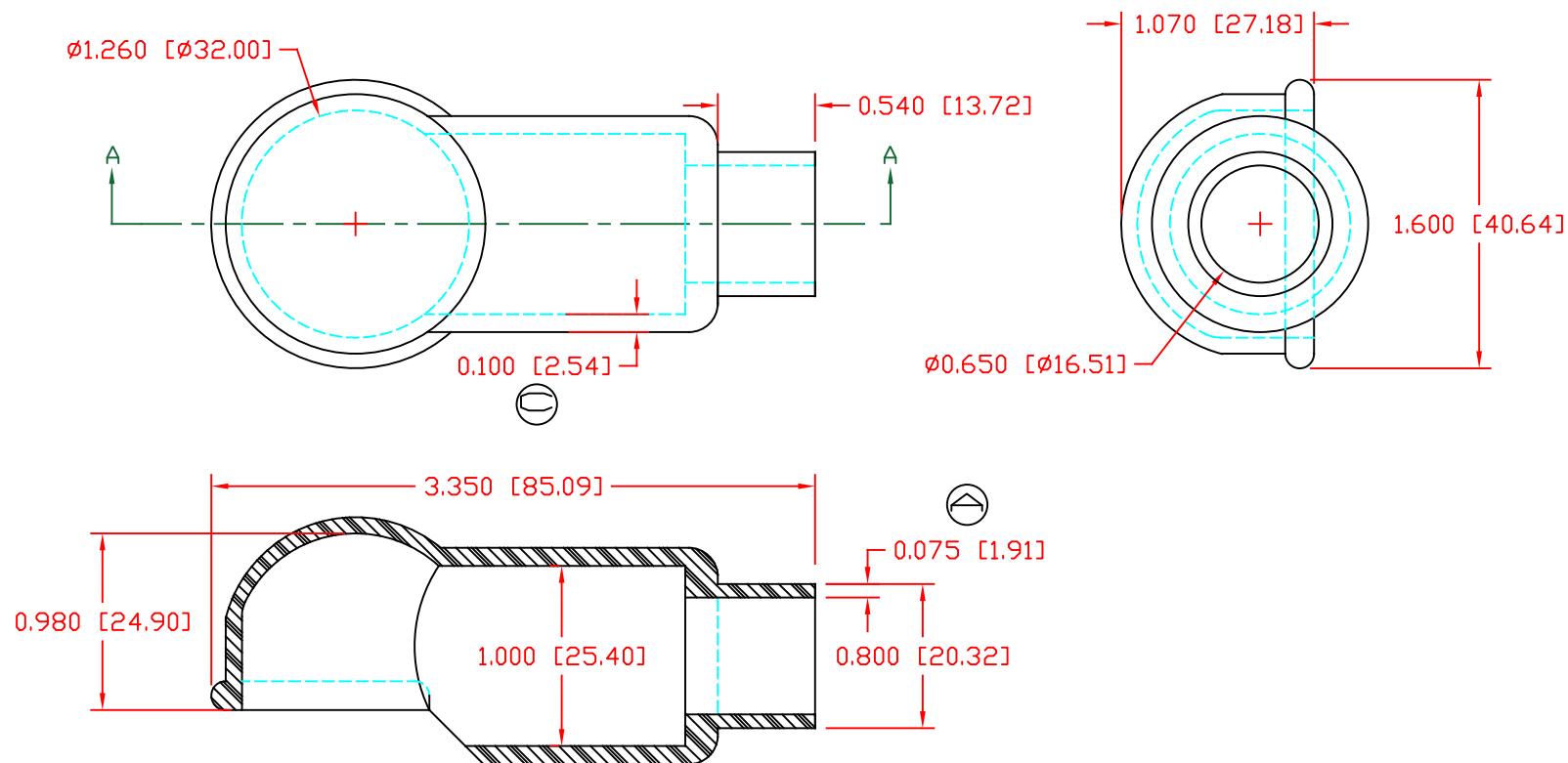


THE INFORMATION CONTAINED IN THIS DRAWING IS THE SOLE PROPERTY OF VTE INCORPORATED. ANY REPRODUCTION IN PART OR WHOLE WITHOUT THE WRITTEN PERMISSION OF VTE INCORPORATED IS PROHIBITED. VTE MAKES NO WARRANTY, EXPRESSED OR IMPLIED, AS TO THE SUITABILITY OF A PRODUCT FOR ANY INTENDED USE. THE CUSTOMER SHALL BEAR THE SOLE RESPONSIBILITY OF DETERMINING THE SUITABILITY OF ANY VTE PRODUCT FOR ITS END USE.

| LTR. | REVISIONS | DATE | INT. |
|------|---------------------------------------|----------|------|
| A | SEAL WALL THICKNESS REVISED TO 0.075" | 11-04-19 | EJE |
| B | UPDATED MATERIAL INFORMATION | 8-02-22 | RAS |
| C | REMOVED "TYP. WALL THICKNESS" NOTE | 10-24-22 | RAS |




SECTION A-A

SCALE FACTOR : NONE
ALL DIMENSIONS GIVEN AS: in [mm]
TOLERANCES UNLESS OTHERWISE SPECIFIED :
MOLDED PARTS: ± 0.030 " [± 0.8 mm]
ALL ANGLES ARE ± 1 DEGREE

VTE MATERIAL PART NO: 1101650114
MATERIAL: BLACK PVC
MATERIAL PART NO: 9812-65
MAX OPERATING TEMPERATURE: 105 C
SHORE DUREMETER: "A" 10 SEC. 67/63
SPECIFIC GRAVITY: 1.33
ELONGATION %: 520
BRITTLENESS TEMPERATURE: -36 C
TENSILE STRENGTH, PSI: 1563 PSI

U.L. RATING: 94 V2
MEETS: FMVSS.302

| | | | | | |
|---|-----------------------------------|-----------|----------|---|--|
|  | | | | VTE Incorporated 5437 Robinson Road, P.O. Box 790 Pellston, Michigan 49769 Telephone: 1-800-527-9256, 231-539-8000 FAX: 231-539-0914 | |
| REF: | DATE: | DRN BY: | JC | WEIGHT: | |
| | 4-3-98 | CHK'D BY: | | 058 LBS. / 26.4 G. | |
| TITLE: | STARTER EYELET TERMINAL INSULATOR | | | | |
| MATERIAL: | PVC | PART NO. | 487N8V14 | | |
| COLOR: BLACK | DRG CLASS REV C | | | | |