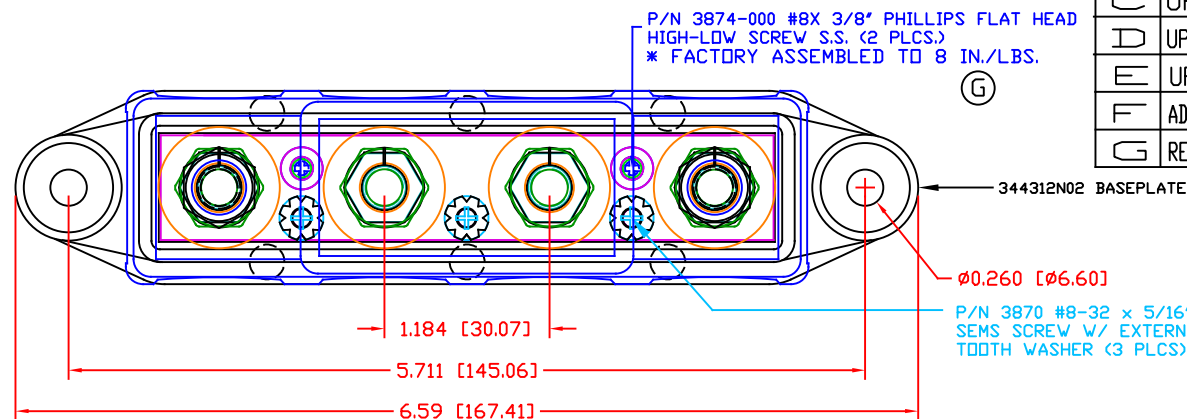


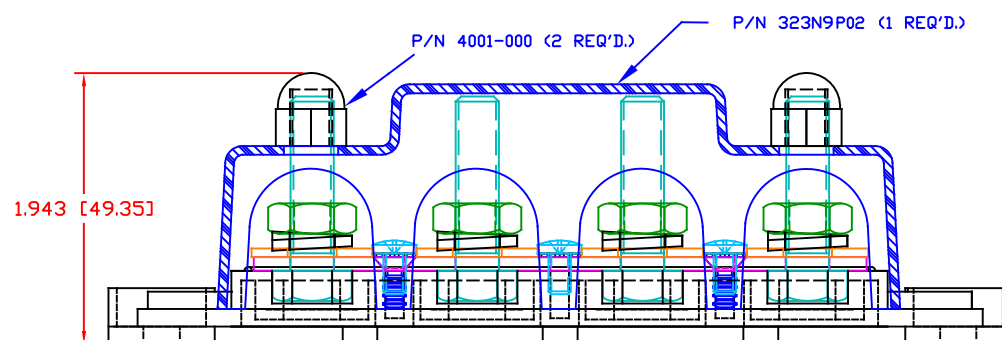
THE INFORMATION CONTAINED IN THIS DRAWING IS THE SOLE PROPERTY OF VTE INCORPORATED. ANY REPRODUCTION IN PART OR WHOLE WITHOUT THE WRITTEN PERMISSION OF VTE INCORPORATED IS PROHIBITED. VTE MAKES NO WARRANTY, EXPRESSED OR IMPLIED, AS TO THE SUITABILITY OF A PRODUCT FOR ANY INTENDED USE. THE CUSTOMER SHALL BEAR THE SOLE RESPONSIBILITY OF DETERMINING THE SUITABILITY OF ANY VTE PRODUCT FOR ITS END USE.

LTR.	REVISIONS	DATE	INT.
A	REMOVED BLUE DOT INSTRUCTION	10-21-15	RAS
B	REPLACED P/N 3843-002 WITH P/N 3843-008	03-28-16	RAS
C	UPDATED CURRENT RATING	06-02-16	RAS
D	UPDATED MAXIMUM AMPERAGE RATING	01-30-17	RAS
E	UPDATED "GALLING" STATEMENT	9-18-23	RAS
F	ADDED FACTORY TORQUE SPEC TO 3874-000	5-23-24	RAS
G	REVISED TORQUE SPEC FROM 10 IN./LBS.	11-13-24	RAS



P/N 3730-000
5/16"-18 UNC X 1.25"
FULLY THREADED STAINLESS
STEEL BOLT (4 PLCS)

P/N 3870 #8-32 x 5/16"
SEMS SCREW W/ EXTERNAL
TOOTH WASHER (3 PLCS)

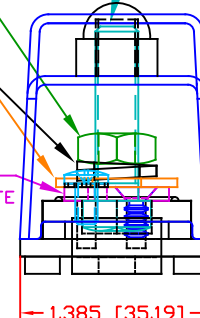


P/N 3843-008
5/16"-18 HEAVY HEX NUT
STAINLESS STEEL (4 PLCS)

P/N 3642-000
STAINLESS STEEL SPRING
WASHER
(4 PLCS)

P/N 3645-000
18-8 STAINLESS STEEL
FLAT WASHER (4 PLCS)

P/N 3885-001
5/16" CONTACT PLATE




SCALE FACTOR : NONE
ALL DIMENSIONS GIVEN AS: in [mm]
TOLERANCES UNLESS OTHERWISE SPECIFIED :
MOLDED PARTS: ±0.030" [±0.8mm]
HARDWARE ITEMS: ±0.010" [±0.25mm]

MATERIAL PART NO: 7111210502
MATERIAL: GLASS FILLED NYLON
VENDOR PART NO: HYLON N2015 HL NAT
SPECIFIC GRAVITY: 1.23
MELTING TEMP: 515 F [268 C]
U.L. RATING: UL 94 HB

INCLUDES COVER P/N 723N5 AND ASSEMBLY 74312N0N02

MAXIMUM RECOMMENDED FASTENER TORQUE: 12 FT./LBS. (144 IN./LBS.)
(IF WARRANTED, DIELECTRIC GREASE CAN BE USED TO PREVENT GALLING)
MAXIMUM RECOMMENDED AMPERAGE: 250 AMPS @ 12VDC

		VTE Incorporated	
		5437 Robinson Road, P.O. Box 790 Pellston, Michigan 49769 Telephone: 1-800-527-9256, 231-539-8000 FAX: 231-539-0914	
REF:	DATE:	DRN BY:	BRH
CUSTOMER DIMS	08-16-10	CHK'D BY:	BRH
TITLE: BUSBAR, 4 POINT, 5/16" W/ COVER			SCALE: NONE
MATERIAL: GLASS-FILLED NYLON		PART NO.	
COLOR: RED		74312N1N02	
DRG CLASS		REV G	