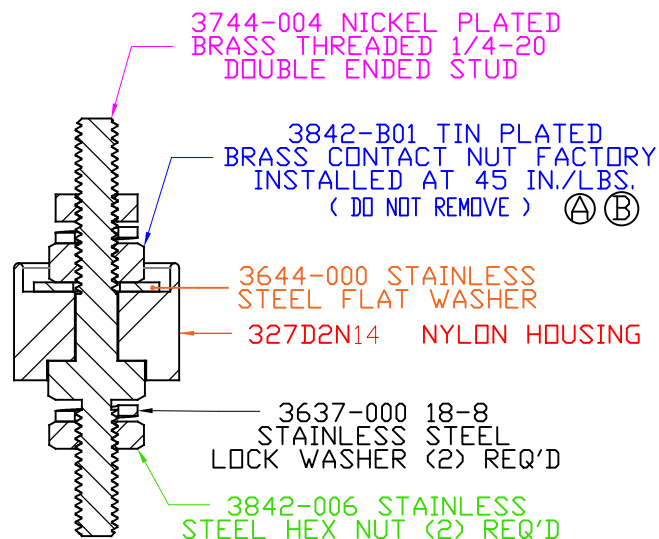
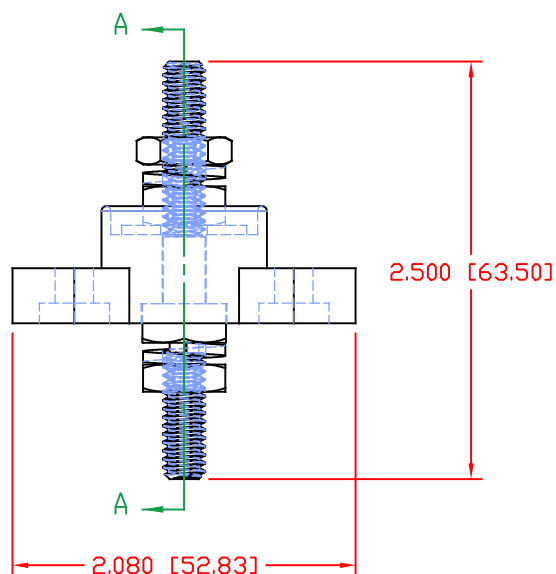
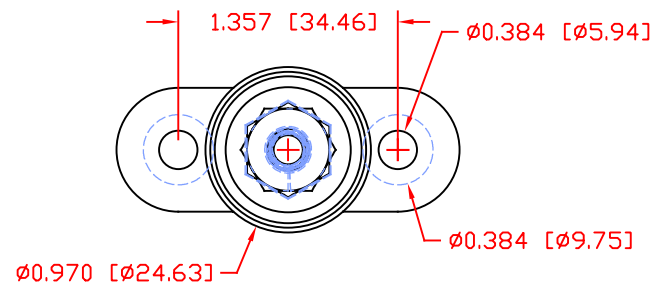
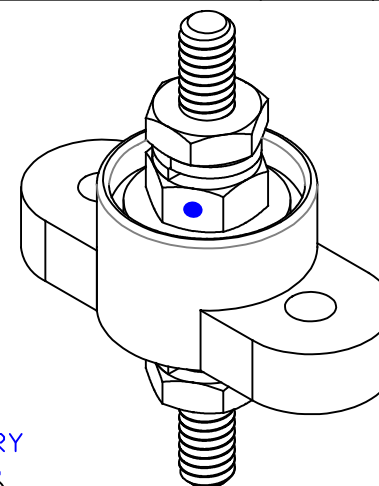


THE INFORMATION CONTAINED IN THIS DRAWING IS THE SOLE PROPERTY OF VTE INCORPORATED. ANY REPRODUCTION IN PART OR WHOLE WITHOUT THE WRITTEN PERMISSION OF VTE INCORPORATED IS PROHIBITED. VTE MAKES NO WARRANTY, EXPRESSED OR IMPLIED, AS TO THE SUITABILITY OF A PRODUCT FOR ANY INTENDED USE. THE CUSTOMER SHALL BEAR THE SOLE RESPONSIBILITY OF DETERMINING THE SUITABILITY OF ANY VTE PRODUCT FOR ITS END USE.

LTR.	REVISIONS	DATE	INT.
A	UPDATED TORQUE VALUE	07-01-20	EJE
B	UPDATED TORQUE VALUE FROM 56 IN/LBS	05-24-20	EJE



SECTION A-A




SCALE FACTOR : NONE  
ALL DIMENSIONS GIVEN AS: in [mm]  
TOLERANCES UNLESS OTHERWISE SPECIFIED :  
MOLDED PARTS: ±.030" [±0.8mm]  
HARDWARE ITEMS: ±.010" [±0.25mm]

MATERIAL PART NO:  
MATERIAL:  
VENDOR PART NO:  
SPECIFIC GRAVITY:  
MELTING TEMP:  
U.L. RATING:

1111210514UL  
GLASS FILLED NYLON  
HYLON N2015 HL BK  
1.23  
515 F [268 C]  
UL 94 HB

MAXIMUM RECOMMENDED FASTENER TORQUE: 45 IN./LBS.

MAXIMUM AMPERAGE: 250 AMPS AT 12 VDC

		VTE Incorporated	
		5437 Robinson Road, P.O. Box 790 Pellston, Michigan 49769 Telephone: 1-800-527-9256, 231-539-8000 FAX: 231-539-0914	
REF:	DATE: 5-22-19	DRN BY: RAS CHK'D BY: PJK	WEIGHT:
TITLE: 1/4"-20 JUNCTION BLOCK, STUD TYPE, PASS-THRU			
MATERIAL: GLASS FILLED NYLON		PART NO.	
COLOR: BLACK	DRG CLASS REV B	77225N14	