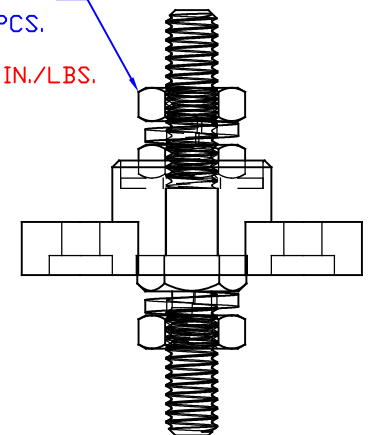
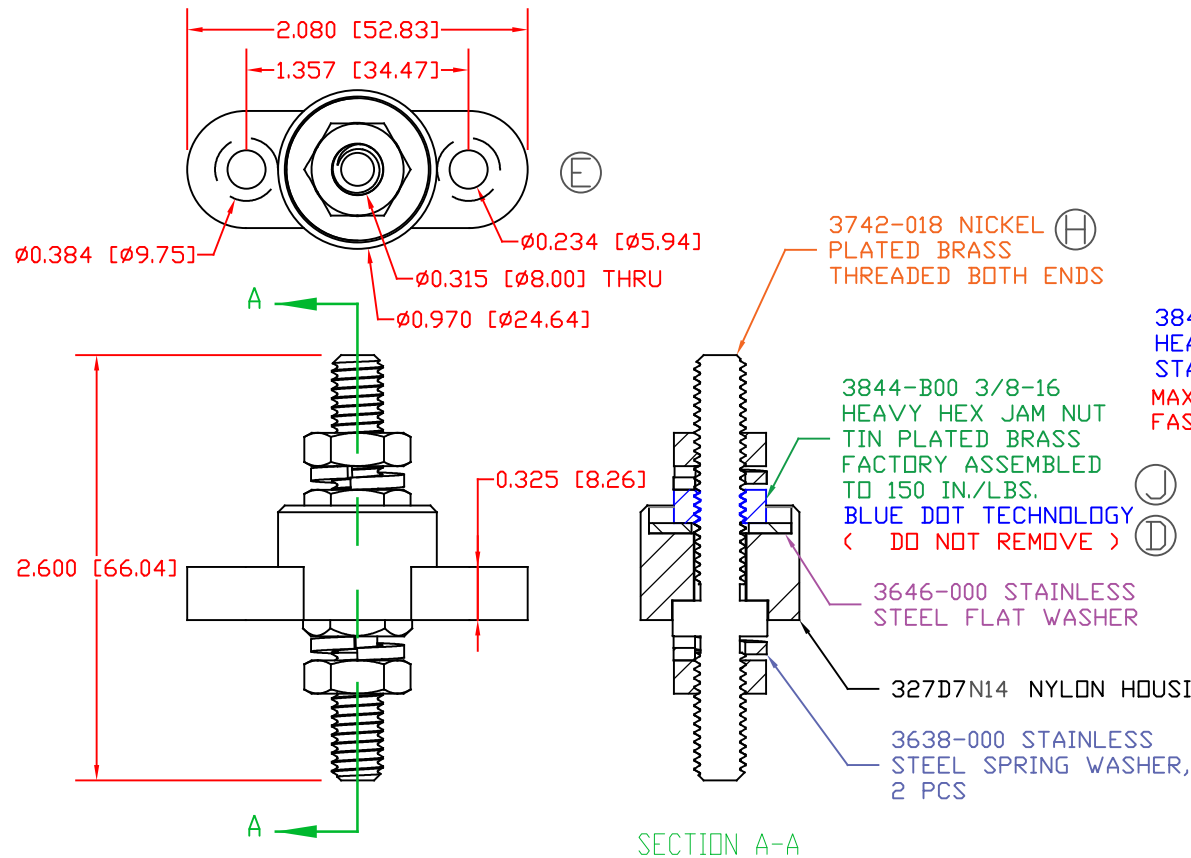


THE INFORMATION CONTAINED IN THIS DRAWING IS THE SOLE PROPERTY OF VTE INCORPORATED. ANY REPRODUCTION IN PART OR WHOLE WITHOUT THE WRITTEN PERMISSION OF VTE INCORPORATED IS PROHIBITED. VTE MAKES NO WARRANTY, EXPRESSED OR IMPLIED, AS TO THE SUITABILITY OF A PRODUCT FOR ANY INTENDED USE. THE CUSTOMER SHALL BEAR THE SOLE RESPONSIBILITY OF DETERMINING THE SUITABILITY OF ANY VTE PRODUCT FOR ITS END USE.

LTR.	REVISIONS	DATE	INT.
A	3844-012 WAS 3844-000	11-01-16	JMM
B	REVISED TORQUE FROM 144 IN./LBS.	05-11-17	RAS
C	ADDED LOCKTITE FOR CONTACT NUT ASSEMBLY	05-11-17	RAS
D	3844-B00 WAS 3844-000	6-02-17	JMM
E	UPDATED AND ADDED DIMENSIONS FOR MOUNTING	7-31-17	RAS
F	UPDATED ELECTRICAL VALUES	10-25-18	RAS
G	UPDATED TORQUE VALUE	7-01-20	EJE
H	UPDATED PART # FROM 3742-000	8-18-21	RAS
I	UPDATED PART # FROM 327D4	8-23-21	RAS
J	UPDATED TORQUE VALUE FROM 160 IN./LBS	8-26-21	RAS
K	UPDATED ELECTRICAL VALUES	10-18-22	RAS




SCALE FACTOR: NONE  
ALL DIMENSIONS GIVEN AS: in [mm]  
TOLERANCES UNLESS OTHERWISE SPECIFIED:  
MOLDED PARTS: ±.030" [±0.8mm]  
HARDWARE ITEMS: ±.010" [±0.25mm]

INCLUDES P-16808110001 BLUE DOT MULTI LABEL, 1 PER CONTAINER

MATERIAL PART NO: 111210514UL  
MATERIAL: GLASS FILLED NYLON  
VENDOR PART NO: NYLON N2015 HL BK  
SPECIFIC GRAVITY: 1.23  
MELTING TEMP: 515 F [268 C]  
U.L. RATING: UL 94 HB

CURRENT CARRYING CAPACITY: (375 AMP @ 12VDC)

		VTE Incorporated	
		5437 Robinson Road, P.O. Box 790 Pellston, Michigan 49769 Telephone: 1-800-527-9256, 231-539-8000 FAX: 231-539-0914	
REF: CUSTOMER DIMS	DATE: 8-26-21	DRN BY: RAS CHK'D BY: PJK	WEIGHT:
TITLE: JUNCTION BLOCK, STUD TYPE, PASS-THRU			SCALE: NONE
MATERIAL: GLASS FILLED NYLON		PART NO.	
COLOR: BLACK	DRG CLASS: REV K	77237N14	