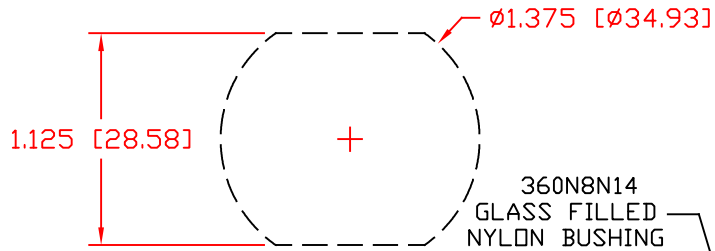
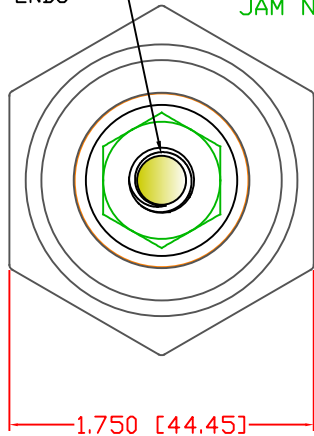


THE INFORMATION CONTAINED IN THIS DRAWING IS THE SOLE PROPERTY OF VTE INCORPORATED. ANY REPRODUCTION IN PART OR WHOLE WITHOUT THE WRITTEN PERMISSION OF VTE INCORPORATED IS PROHIBITED. VTE MAKES NO WARRANTY, EXPRESSED OR IMPLIED, AS TO THE SUITABILITY OF A PRODUCT FOR ANY INTENDED USE. THE CUSTOMER SHALL BEAR THE SOLE RESPONSIBILITY OF DETERMINING THE SUITABILITY OF ANY VTE PRODUCT FOR ITS END USE.

USE GREENLEE PUNCH
ASSEMBLY #60098
FOR PANEL CUTOUT



YELLOW DOT
METRIC IDENTIFIER
BOTH ENDS



3845-000 M10 X 1.5
STAINLESS STEEL
JAM NUT (2) REQ'D

3646-000
STAINLESS STEEL
FLAT WASHER (2) REQ'D

359N0N14
PANEL SEALING NUT

360N8N14
GLASS FILLED
NYLON BUSHING

CC-TAG

3638-M LOCK WASHER
STAINLESS STEEL (2) REQ'D

3742-009
NICKEL PLATED
MOUNTING STUD

3864-000
COPPER CORE

3648-003
COPPER WASHER
(2) REQ'D

3.090 [78.48]
FOR REFERENCE ONLY

SECTION A-A

SCALE FACTOR : NONE
ALL DIMENSIONS GIVEN AS: in [mm]
TOLERANCES UNLESS OTHERWISE SPECIFIED :
MOLDED PARTS: ±0.30" [±0.8mm]
HARDWARE ITEMS: ±.010" [±0.25mm]

Ⓜ MAXIMUM FASTENER TORQUES:
JAM NUTS: 212 IN-LBS [24.0 Nm]
SEALING NUT: 120 IN-LBS [13.5 Nm]

CURRENT CARRYING CAPACITY:
DUTY CYCLE: 80%
CURRENT CAPACITY: 4.3 Kw (360 AMP @ 12VDC)
TEMPORARY MAX (12 MINUTES) 5.4 Kw (450 AMP @ 12VDC)

Ⓜ MATERIAL PART NO: 111210514UL
MATERIAL: GLASS FILLED NYLON
VENDOR PART NO: HYLON N2015 HL BK
SPECIFIC GRAVITY: 1.23
MELTING TEMP: 515 F [268 C]
U.L. RATING: UL 94 HB

Ⓜ Ⓜ

Ⓜ

| LTR. | REVISIONS | DATE | INT. |
|------|--|----------|------|
| A | 3.07" WAS 3.25" | 5-11-10 | BRH |
| B | REDUCED FROM 550 AMP | 11-17-15 | RAS |
| C | ADDED TORQUE TAG | 12-29-15 | RAS |
| D | INCREASED FROM 350 AMP | 1-01-16 | RAS |
| E | MOVED TORQUE TAG TO OPPOSITE POST | 1-27-16 | RAS |
| F | REMOVED IDENTIFYING GASKET | 04-18-17 | RAS |
| G | 3.09 WAS 3.07 | 06-07-17 | JMM |
| H | REDRAWN (ORIGINAL DRAWING 5-28-09) | 11-10-17 | RAS |
| I | UPDATED TORQUE VALUES FROM 180 IN-LBS [20.34 Nm] | 2-03-18 | RAS |

VTE Incorporated
5437 Robinson Road, P.O. Box 790
Pellston, Michigan 49769
Telephone: 1-800-527-9256, 231-539-8000
FAX: 231-539-0914

| | | | |
|--|------------------|------------------------------|---------|
| REF: CUSTOMER DIMS | DATE: 11-10-17 | DRN BY: RAS CHK'D BY: PJK | WEIGHT: |
| TITLE: 10MM POWER BUSHING, COPPER CORE | | | |
| MATERIAL: GLASS FILLED NYLON | | PART NO. | |
| COLOR: BLACK | DRG CLASS: REV I | CCB376M0N14 | |