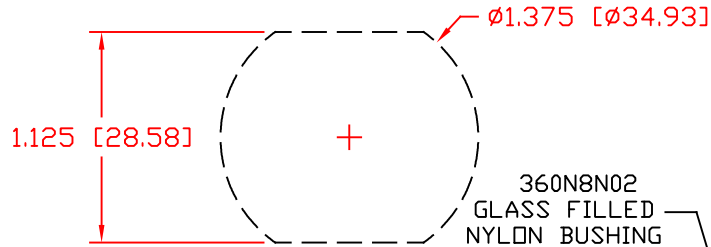
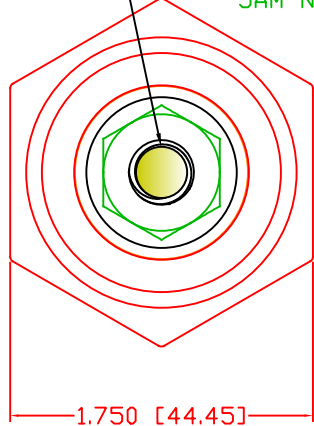


THE INFORMATION CONTAINED IN THIS DRAWING IS THE SOLE PROPERTY OF VTE INCORPORATED. ANY REPRODUCTION IN PART OR WHOLE WITHOUT THE WRITTEN PERMISSION OF VTE INCORPORATED IS PROHIBITED. VTE MAKES NO WARRANTY, EXPRESSED OR IMPLIED, AS TO THE SUITABILITY OF A PRODUCT FOR ANY INTENDED USE. THE CUSTOMER SHALL BEAR THE SOLE RESPONSIBILITY OF DETERMINING THE SUITABILITY OF ANY VTE PRODUCT FOR ITS END USE.

USE GREENLEE PUNCH  
ASSEMBLY #60098  
FOR PANEL CUTOUT



YELLOW DOT  
METRIC IDENTIFIER  
BOTH ENDS



3845-000 M10 X 1.5  
STAINLESS STEEL  
JAM NUT (2) REQ'D

3646-000  
STAINLESS STEEL  
FLAT WASHER (2) REQ'D

360N8N02  
GLASS FILLED  
NYLON BUSHING

359N0N02  
PANEL SEALING NUT

CC-TAG

3638-M LOCK WASHER  
STAINLESS STEEL (2) REQ'D

3742-009  
NICKEL PLATED  
MOUNTING STUD

3648-003  
COPPER WASHER  
(2) REQ'D

3864-000  
COPPER CORE

SECTION A-A

3.090 [78.48]  
FOR REFERENCE ONLY

SCALE FACTOR : NONE  
ALL DIMENSIONS GIVEN AS: in [mm]  
TOLERANCES UNLESS OTHERWISE SPECIFIED :  
MOLDED PARTS: ±0.030" [±0.8mm]  
HARDWARE ITEMS: ±0.010" [±0.25mm]

MAXIMUM FASTENER TORQUES:  
JAM NUTS: 212 IN-LBS [24.0 Nm]  
SEALING NUT: 120 IN-LBS [13.5 Nm]


CURRENT CARRYING CAPACITY:  
DUTY CYCLE:  
CURRENT CAPACITY:  
TEMPORARY MAX (12 MINUTES)

80%  
4.3 Kw (360 AMP @ 12VDC)  
5.4 Kw (450 AMP @ 12VDC)

MATERIAL PART NO:  
MATERIAL:  
VENDOR PART NO:  
SPECIFIC GRAVITY:  
MELTING TEMP:  
U.L. RATING:

7111210502  
GLASS FILLED NYLON  
HYLON N2015 HL NAT  
1.23  
515 F [268 C]  
UL 94 HB

LTR.	REVISIONS	DATE	INT.
A	3.07" WAS 3.25"	5-11-10	BRH
B	REDUCED FROM 550 AMP	11-17-15	RAS
C	ADDED TORQUE TAG	12-29-15	RAS
D	INCREASED FROM 350 AMP	1-01-16	RAS
E	MOVED TORQUE TAG TO OPPOSITE POST	1-27-16	RAS
F	REMOVED IDENTIFYING GASKET	04-18-17	RAS
G	3.09 WAS 3.07	06-07-17	JMM
H	REDRAWN ( ORIGINAL DRAWING 5-28-09)	11-10-17	RAS
I	UPDATED TORQUE VALUES FROM 180 IN-LBS [20.34 Nm]	2-03-18	RAS



**VTE Incorporated**  
5437 Robinson Road, P.O. Box 790  
Pellston, Michigan 49769  
Telephone: 1-800-527-9256, 231-539-8000  
FAX: 231-539-0914

REF:	DATE: 11-10-17	DRN BY: RAS	WEIGHT:
CUSTOMER DIMS		CHK'D BY: PJK	
TITLE: 10MM POWER BUSHING, COPPER CORE			
MATERIAL: GLASS FILLED NYLON		PART NO.	
COLOR: RED	DRG CLASS	REV I	
CCB376M0NR02			